

SOYBEANS



S25-G8E3 BRAND

RM:
2.5

NEW

CHU:
3150



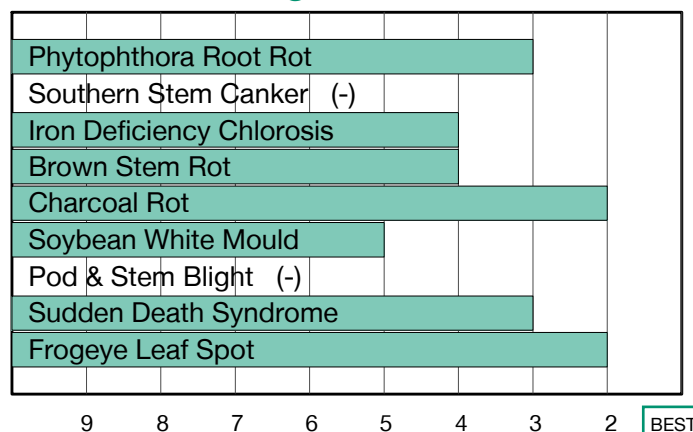
Strong Disease Package with Top-end Yield Potential to Maximize Performance

- Medium-tall plant type that maintains height on variable acres
- Very good Sudden Death Syndrome tolerance
- Solid performance across soil types

Plant Characteristics

Plant Height	Medium-Tall
Canopy Index	5.94
Branching	Moderate
Growth Habit	Indeterminate
Flower Colour	Purple
Pubescence Colour	Gray
Pod Colour	Tan
Hilum Colour	Buff
Chloride Sensitivity	Includer

Disease Ratings



Agronomic Traits

Emergence	2
Standability	3
Shatter Tolerance	3
Green Stem	2
Estimated Seed Size	Small
Protein	Average
Oil	Very High
Narrow Rows	2
Wide Rows	1
Metribuzin Response	-
Sulfentrazone Response	-

Adaptation to Soil Types

Drought Prone	Fair
High pH*	Fair
Highly Productive	Good
Moderate/Variable Environments	Best
Poorly Drained	Best

Diseases and Pests

Phytophthora Root Rot (PRR) Source	Rps1c
Soybean Cyst Nematode (SCN) Races	MR3, MR14
(SCN) Source	PI88788
Root Knot Nematode (RKN) Incognita	-

For more information: Visit syngenta.ca, contact our Customer Interaction Centre at 87-SYNGENTA, or follow @NKSeedsCanada on Twitter.

1-9 Scale: 1 = Best, 9 = Worst, (-) = Not Available.
Adaptation and Responses: Best > Good > Fair > Poor.

Protein and Oil: Ultra High > Very High > High > Average > Low.
Canopy Index: Reflects plant height, width and branching. 1 = Smallest, 9 = Largest.



Seed products with the LibertyLink® (LL) trait are resistant to the herbicide glufosinate ammonium, an alternative to glyphosate in corn and soybeans, and combine high-yielding genetics with the powerful, non-selective, postemergent weed control of Liberty® herbicide for optimum yield and excellent weed control.

* Represents an assessment of stand establishment, chlorosis severity and yield performance

Performance evaluations are based on field observations and public information. Data from multiple locations and years should be consulted whenever possible. Individual results may vary depending on local growing, soil and weather conditions. IMPORTANT: ALWAYS READ AND FOLLOW SEED BAG/TAG DIRECTIONS.

BASF, LibertyLink®, Liberty® and the Water Droplet logo are registered trademarks of BASF Group. Only seed labeled as tolerant to glufosinate may be sprayed with glufosinate ammonium based herbicides. Only 2,4-D choline formulations with Colex-D® Technology are approved for use with ENLIST E3® soybeans. The transgenic soybean event in ENLIST E3® soybeans is jointly developed and owned by Corteva Agriscience LLC and MS Technologies LLC. ENLIST® and ENLIST E3® are registered trademarks of Corteva Agriscience LLC. Trademarks and service marks are the property of their respective owners. © 2023 Syngenta.